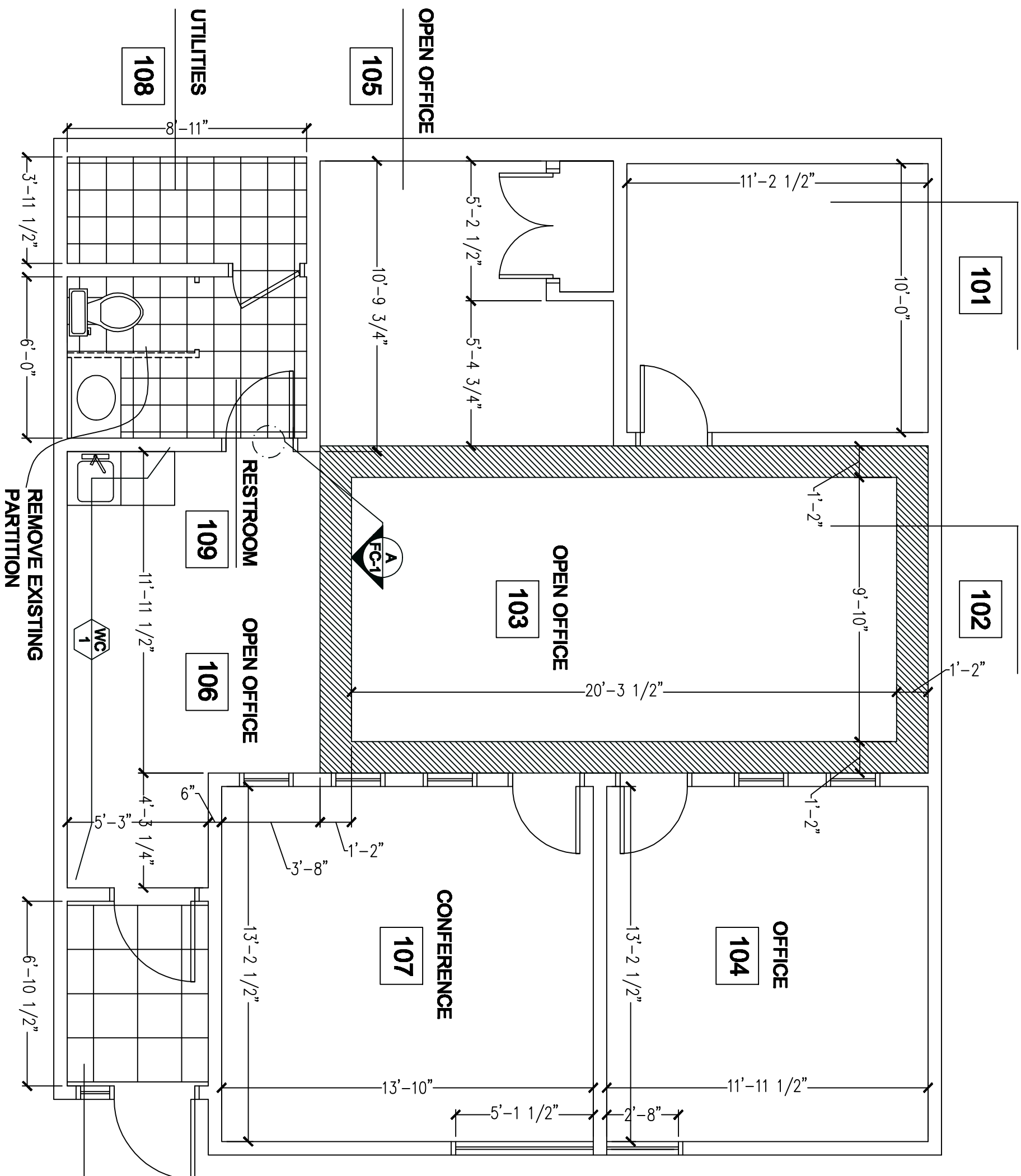


OFFICE/CONFERENCE

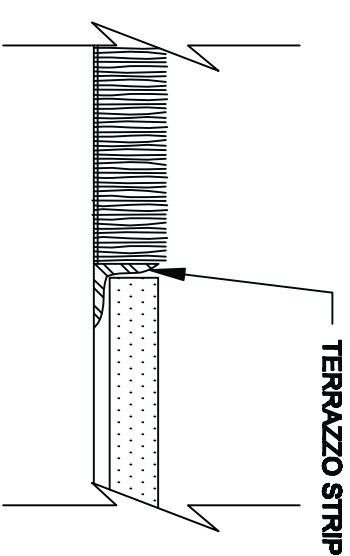
OPEN OFFICE



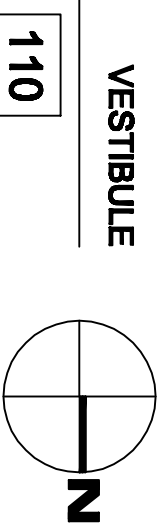
LEGEND

CPT-1	
CPT-2	
CPT-3	
CT-1	

NOTE: RESTROOM USES CT-1A FOR BASE TILE



A FLOORING DETAIL
FC-1 SCALE: 1:1



INTERIOR PLANNING & DESIGN INC.
1260 IROQUOIS AVE., SUITE # 112
Naperville, Illinois 60563
Telephone: 630.848.2119
Facsimile: 630.305.9649
joan@interiorplanning.com

PROJECT NUMBER:
2011-02

ISSUE DATES:
□ 24/2/11 FOR ISSUE

REVISIONS:
NO. DATE DESCRIPTION
1 24/2/11 VERIFIED DIMENSIONS

LIBERTYVILLE
OFFICE REMODEL
2011-02

DRAWN BY: J.C.
DATE: 2-10-2011

FINISH
PLAN
SCALE: 1/4" = 1'-0"

SHEET:
F-1

COMPONENT: 3rd FLOOR
PLANNING & DESIGN, INC.
THESE PLANS AND PROVISIONS
ARE THE PROPERTY OF INTERIOR
PLANNING & DESIGN, INC. ANY
REPRODUCTION OR USE OF THESE
PLANS WITHOUT THE WRITTEN
PERMISSION OF INTERIOR PLANNING &
DESIGN, INC. IS PROHIBITED.